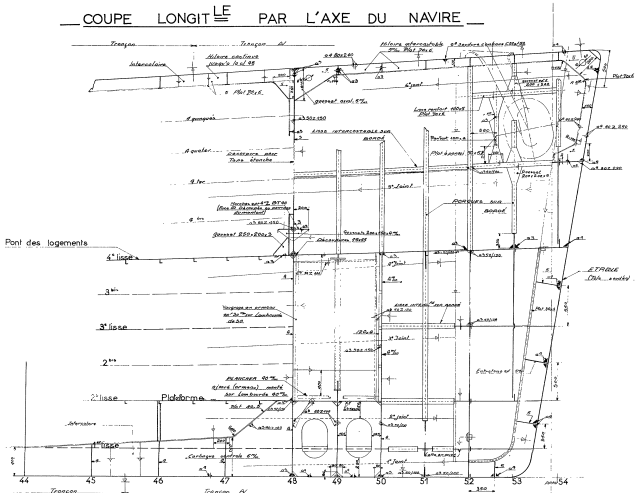


MARINE NATIONALE

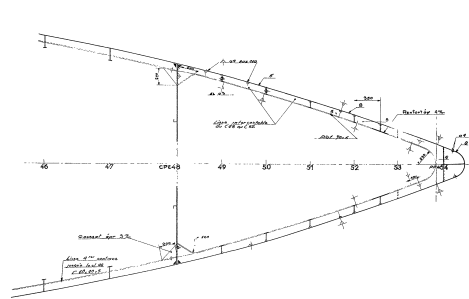
ESCOORTEURS COTIERS Type "LE FOUGUEUX" P1.

1/2 COUPES TRANSVERSALES VUES DE L'ARRIERE

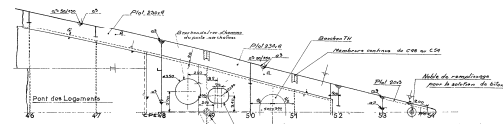
— COUPE LONGIT LE PAR L'AXE DU NAVIRE —



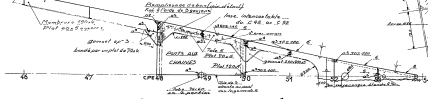
— COUPE A LA LISSE 41<sup>ère</sup> —



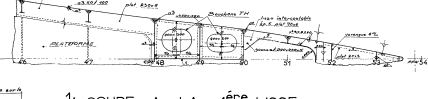
— 1/2 VUE A LA HAUTEUR DU PONT des LOGEMENTS —  
(4<sup>ème</sup> lisse)



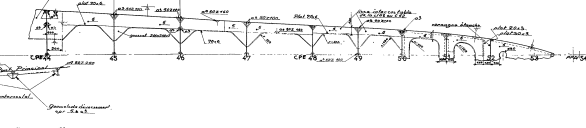
1/2 COUPE A LA 3<sup>ème</sup> LISSE



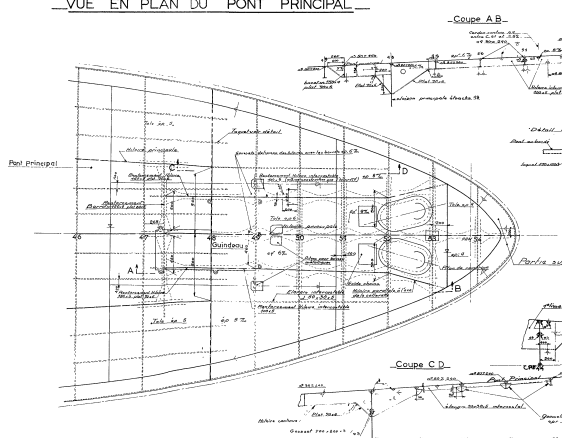
1/2 COUPE A LA 2<sup>ème</sup> LISSE



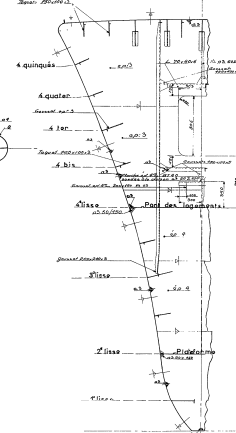
1/2 COUPE A LA 1<sup>ère</sup> LISSE



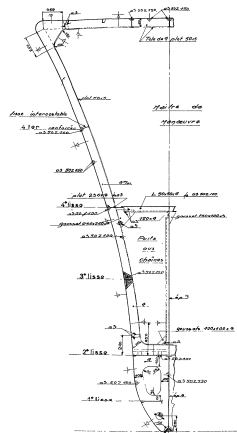
— VUE EN PLAN DU PONT PRINCIPAL —



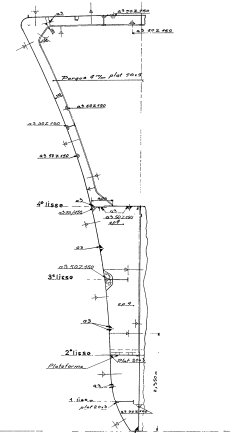
AU C. 48



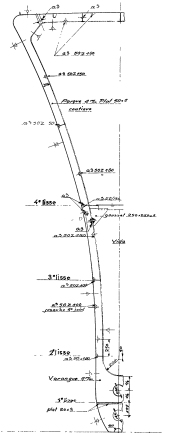
AU C. 49



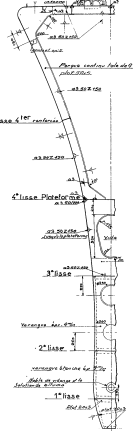
AU C. 50



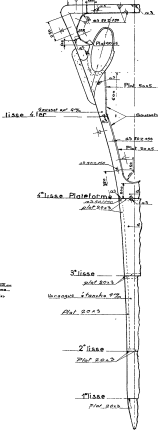
AU C. 51



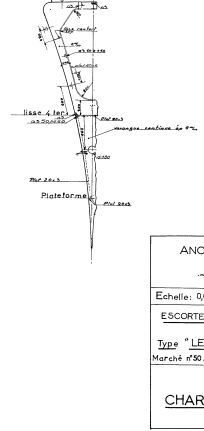
AU C. 52



AU C. 53



AU C. 54



ANCIENS CHANTIERS DUBIGEON ... NANTES CHANTENAY ...	
Echelle: 0/05	
ESCOORTEURS COTIERS	
Type "LE FOUGUEUX" P1	Certifié conforme à l'exécution
Marché N°59 ACCM du 9 décembre 54	Nantes le 15/12/54
	Vu et approuvé en chef du Gabin Maritime Chef de la Circonscription de Nantes.
CHARPENTE A/	PL. 28